



# **RACI: THE IVORY TOWER SYNDROME: OPERATORS' REFLECTIONS ON ACADEMIC BGP SECURITY SOLUTIONS**

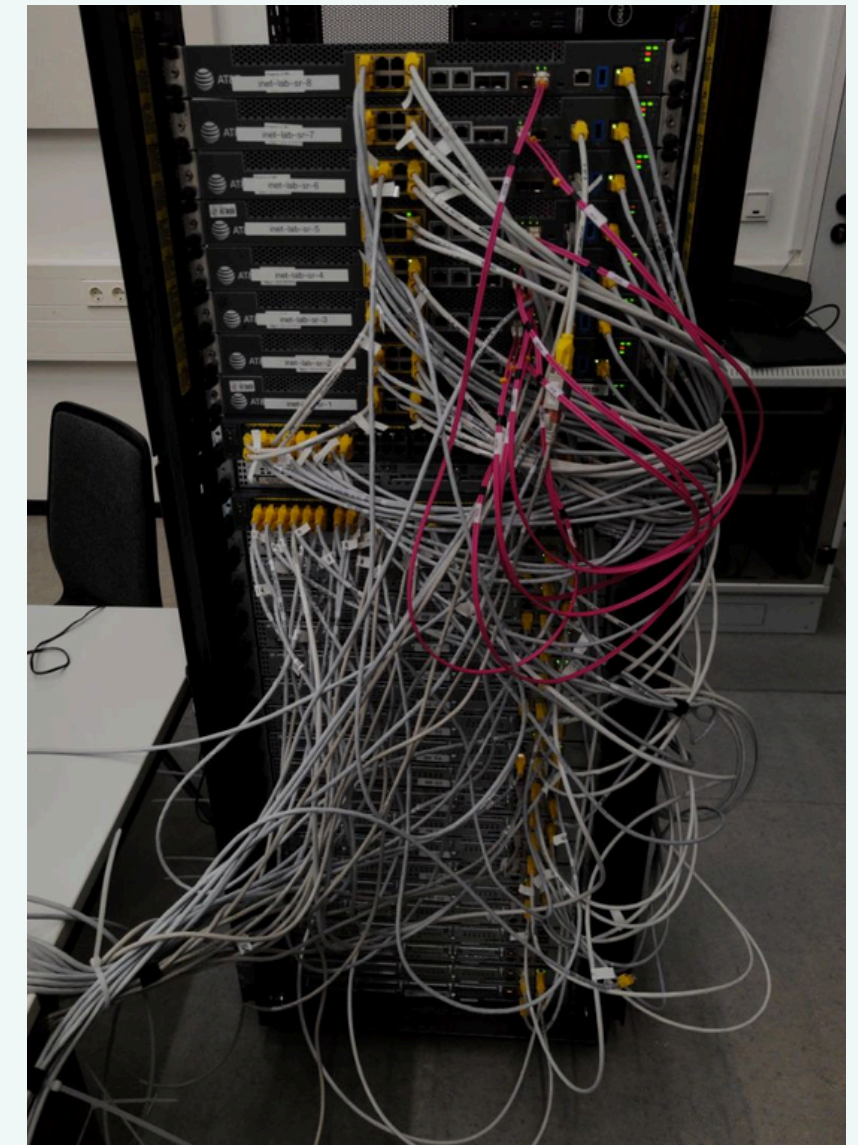
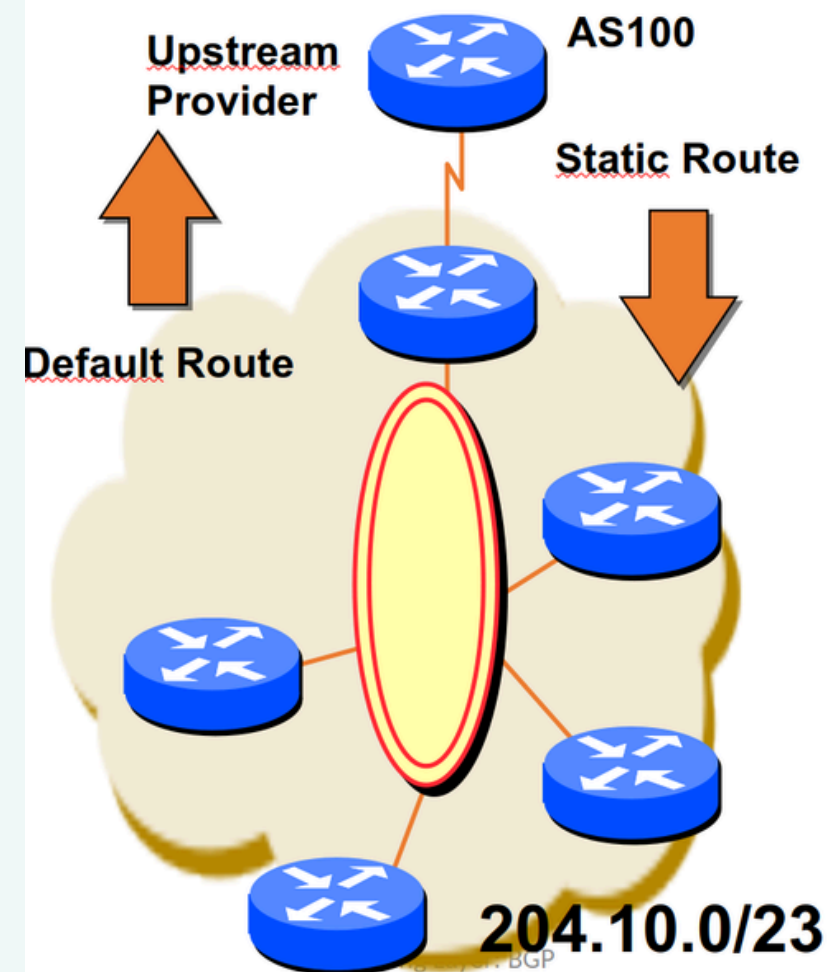
Aleeza Suhel Inamdar

**LIGHTENING TALK: RIPE90 - LISBON**

# MOTIVATION

## ACADEMIA

### Routing at Stub ASs

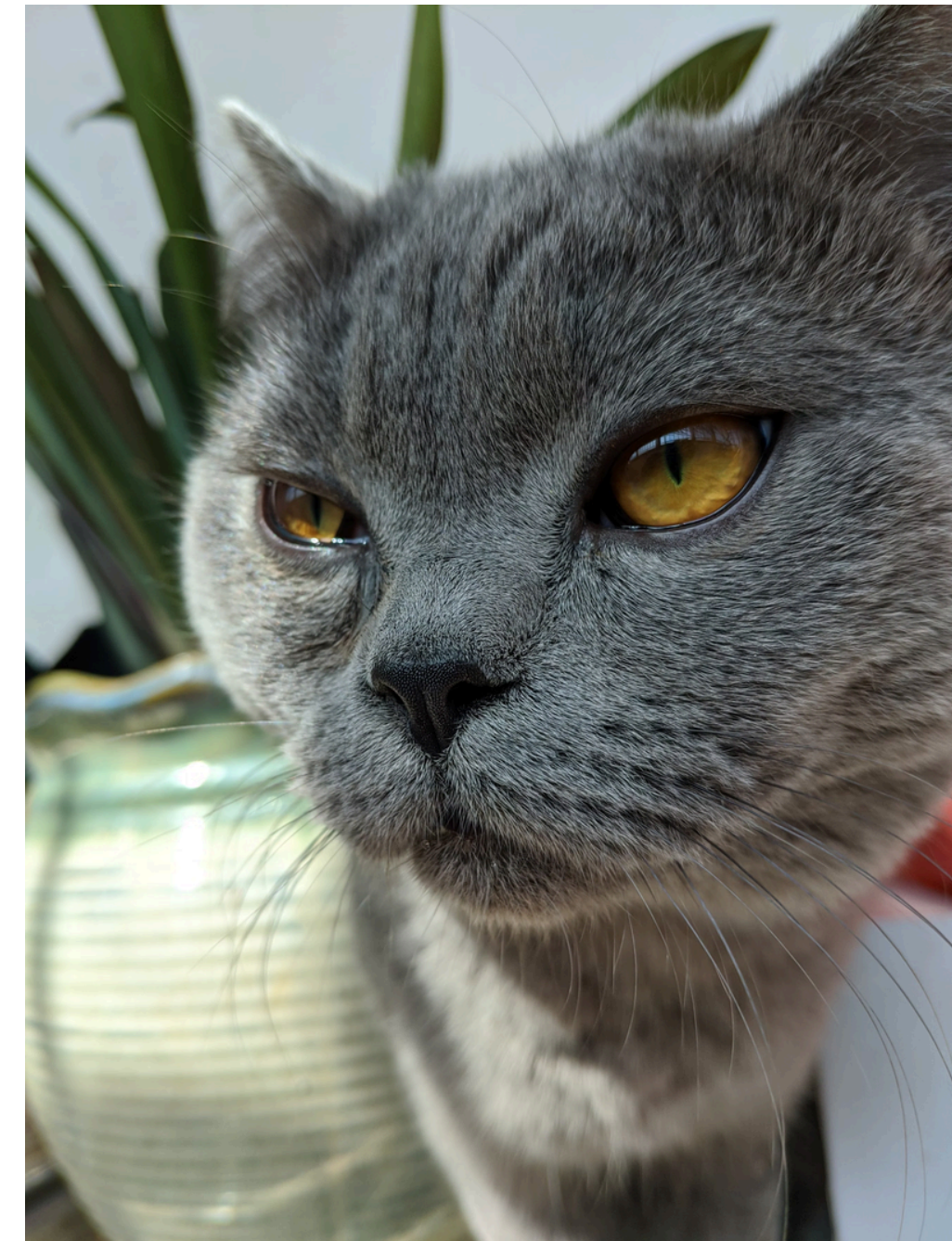


## REALITY

# IS IT... PRACTICAL?

Are the solutions proposed by academics practically feasible?

- There is *a lot* of academic work on BGP security
- There is very little of it implemented in practice
- Anecdotaly, operators tend to be... sceptical



Sidney Ding <https://unsplash.com/@imsidney>



# OPERATIONAL REALITIES

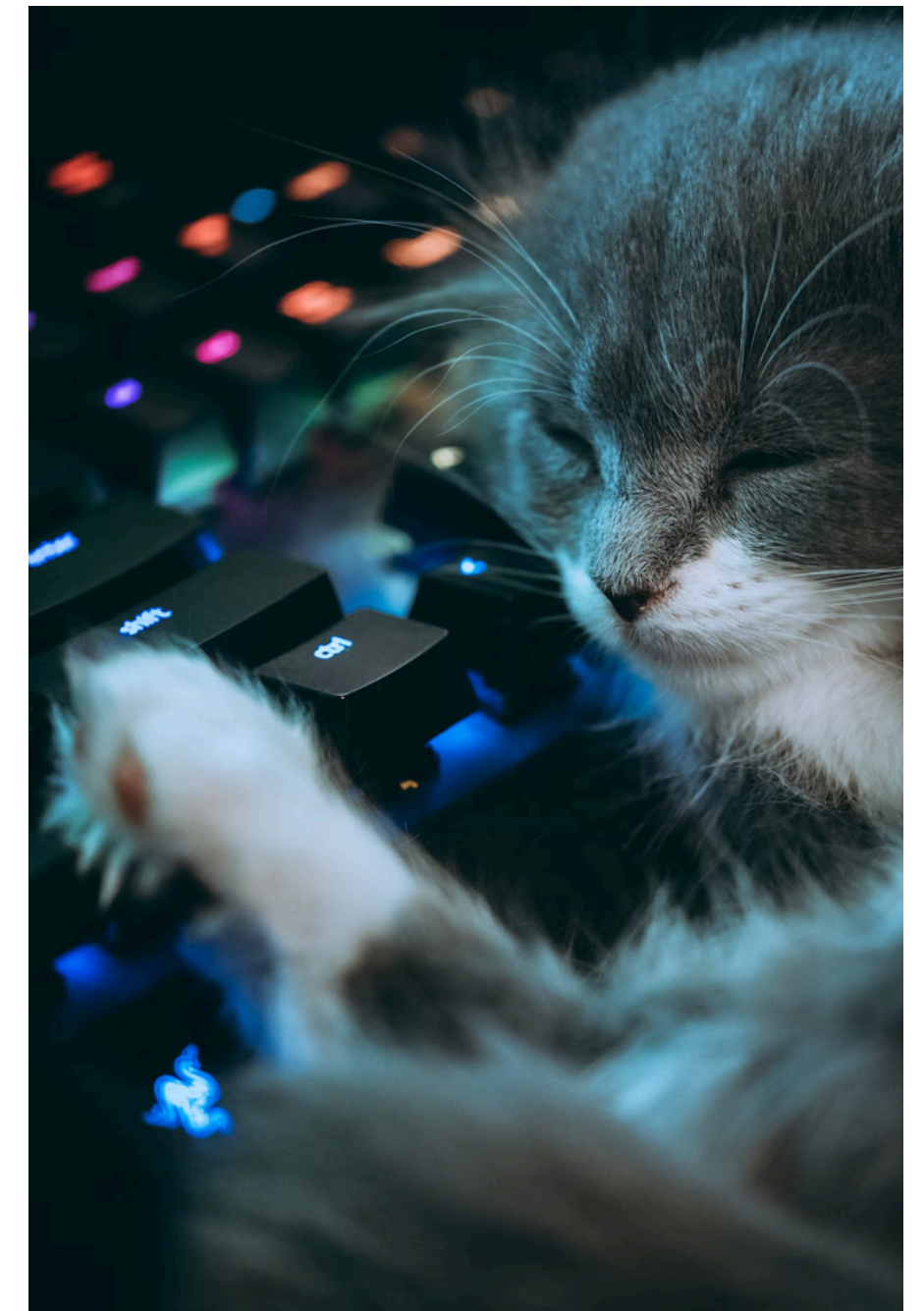
Finding good people is hard...

Younger professionals migrate to  
more sensational fields like AI

BGP is sometimes outsourced due  
to limited in-house capabilities

Cost cutting -> Loss of senior  
engineers -> Juniors are responsible  
for full blown networks

...keeping them is harder.



[Jake Weirick https://unsplash.com/@weirick](https://unsplash.com/@weirick)



# RESEARCH: IMPRACTICAL?



## Examples

- Simplified assumptions on acceptable performance overhead
- Not accounting for organizational coordination overhead
- No vendor implementation (to expect) & no I-D in sight
- Based on old models of the Internet (Uniform Routing Policies, RFC1930)

Lack of practical  
impact in  
academic  
research

Challenges in  
deployment,  
scaling of  
academic  
solutions

Research papers  
don't provide  
adequate solutions  
to operational  
problems

# RESEARCH: SELF-SERVING?



## Examples

- Pay-walled papers (not 'Open Access')
- A lot of text-overhead around the 'important' bits of technology & recommendations
- 'This is the last paper I need to publish for my PhD'
- Abandoned when everyone moved on after graduating

There exists  
access  
barriers to  
research  
papers

Research  
papers may  
not have the  
best format

Academic papers  
are sometimes  
written just for  
the sake of it



# IVORY TOWER SYNDROME

P04: "I've seen MANY solutions  
in search of a problem."

P07: "Research papers are written  
by researchers for other  
researchers"

P04: "In theory, practice  
follows theory. In practice,  
theory is wrong."

P03: "my feeling is that industriy [sic] and  
academia are too disconnected - this feels to  
me as being two different worlds and people  
crossing the lines are the minority"



# WHY THO?



Barriers to Practical  
Implementation

Accessibility:  
An Obstacle

Funding Influence on  
Research Integrity

# WE HAVE A SITUATION...



## Researchers

- Are willing to invest a lot of time to understand the world and make meaningful contributions
- Lack practical experience and real-world guidance



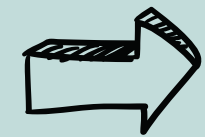
Research-Dog proposing Super-Duper BGP to Operator Cat

Anastacia Dvi <https://unsplash.com/@vasilechak>

## Operators

- Want to run a reliable network and deal with *\$all\_their\_tasks*
- Appreciate *useful* input on their work

# WHAT CAN BE DONE?



Improved communication and collaboration between researchers and practitioners



Ensure transparency in funding and avoid potential conflicts of interests



Propose modular/incremental solutions that are practically feasible



Enhance presentation of findings to increase likelihood of adoption



Integrate real-world practices into the academic curriculum





# EVERYONE: BURN THE IVORY TOWER

Academia, as is, makes these recommendations difficult

We need more long-term engagement with practice to make *actually* useful contributions

P04: "In theory, practice follows theory. In practice, theory is wrong."

Fewer new engineers are entering networking and experienced engineers retire in the next 10-20 years --> notable gap in knowledge distribution between generations