




RIPE NCC
RIPE NETWORK COORDINATION CENTER

RIPE 90 Technical Report

Last Time We Were Here Was RIPE 59 (2009)



And some things are still the same...

**IPv6 at RIPE Meetings**

- New IPv6 assignment - 2001:67c:64::/48
- Assigned following policies
 - 2006-01 (IPv6 PI assignments)
 - 2009-02 (Assignments to the RIPE NCC)
- Procedure took slightly longer than expected
 - We only got final approval of the assignment on Thursday before this RIPE Meeting





The Technical Team

The Technical Team



Preparations



Site inspection (~3 months in advance)



Preparations



Inventory (~1.5 months in advance)



Preparations



Shipping (1 week earlier)



Set Up Weekend



Preparations



We bring:

- 2 SuperMicro Servers (E300-9D-8CN8TP)
- 2 UPS (APC 700VA)
- 6 Juniper switches (EX2300)
- 15 Zyxel POE switches (GS1900)
- 2 boxes of 300 metre ethernet cables
- 300 ethernet cables (ranging from 1 to 30 meters)
- 50 Wi-Fi access points (AC-HD)
- 20 Raspberry Pis
- 3 presentation kits
- 130 power blocks
- Lots of gaffer tape



Logistical issues



08:00 The truck will arrive at 10:00

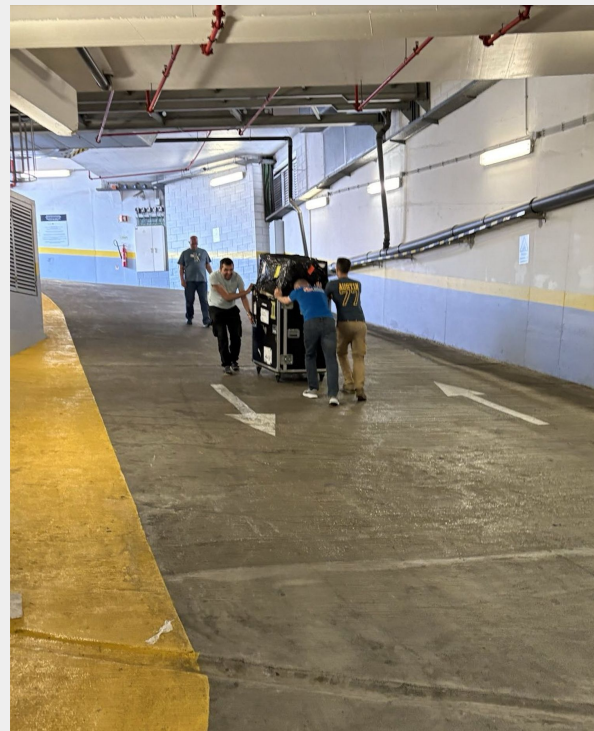
10:45 The truck is stuck in traffic

12:00 The truck actually didn't depart yet, will be there at 15:00

16:30 Truck arrives



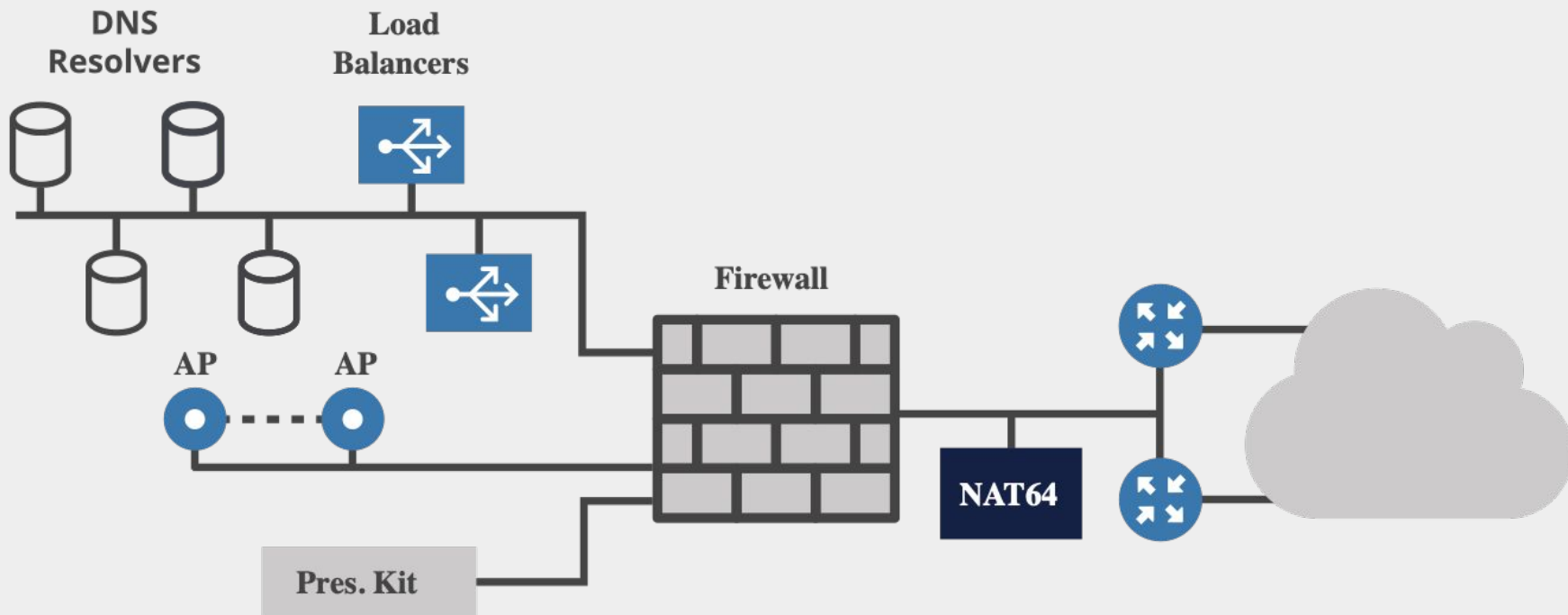
Truck too high for the hotel entrance





Meeting Infrastructure

Logical Topology



Physical Infrastructure



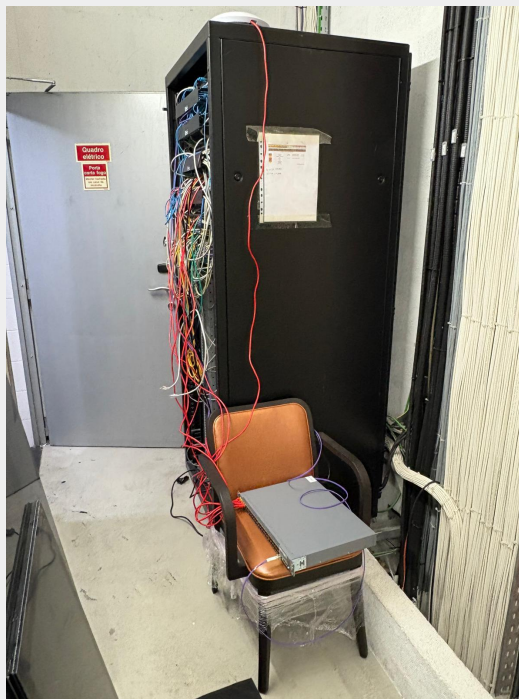
- The hotel allowed us to place our equipment in their server rooms
- Hypervisors running 25 VMs
 - Routers
 - Firewalls
 - DHCP servers
 - DNS Resolvers
 - Wifi controller
- Mostly deployed with Ansible



Physical Infrastructure



- The hotel allowed us to place our equipment in their server rooms
- Hypervisors running 25 VMs
 - Routers
 - Firewalls
 - DHCP servers
 - DNS Resolvers
 - Wifi controller
- Mostly deployed with Ansible





Not a very satisfying experience

- Three new **Wi-Fi 7** access points **Unifi U7 Pro Max**
 - Producing quite a lot of heat
- Support for **6 GHz band**
 - Caused **intermittent connectivity issues** for some devices
 - Wi-Fi connected, no data is received
- Taken **out of service** on Tuesday morning
 - Hopefully some future firmware upgrade fixes it

The Meeting Networks



- **Main network**
 - 5 GHz-only (6 GHz on Monday)
 - IPv6-mostly
- **IPv6-only experiment**
 - 5 GHz-only
 - no IPv4
- **Legacy network**
 - 5 and 2.4 GHz, dual-stack, WPA2
 - 2.4 GHz on **7 APs** used by **7 clients**



IPv6-Mostly Pioneers Since RIPE 85 (2022)



Other industry events are following

- See the presentation in the IPv6 WG
- Still, minor bugs observed
 - like macOS Internet Recovery



Gemini GenAI prompted by Éric Vyncke

The RIPE Meeting Network Runs on Open Source Tech



Component	Technology used
Edge routers	BIRD
Firewall	nftables
DNS Load balancer	keepalived
DNS Resolvers	BIND9
DHCP	Kea
NAT64	Jool
Statistics	collectd + InfluxDB + Grafana
Config management	Ansible



The Presentation System

Presentation System

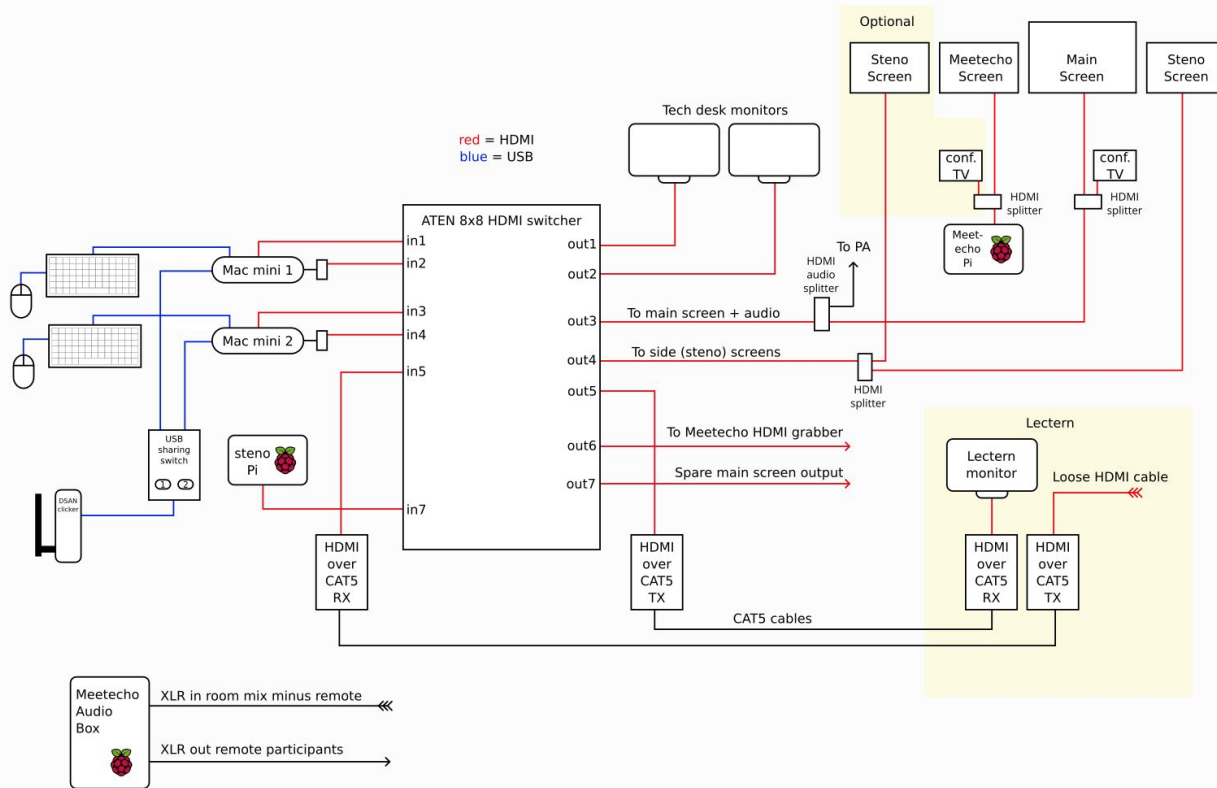


Each room has:

- Two MacMinis
- ATEN HDMI Matrix switcher
- DSAN clicker
- Limitimer clock
- HDMI Grabber for Meetecho
- HDMI Audio extractor
- HDMI Splitters
- HDMI over ethernet extenders
- RPi for Streamtext (steno)



Presentation System Wiring



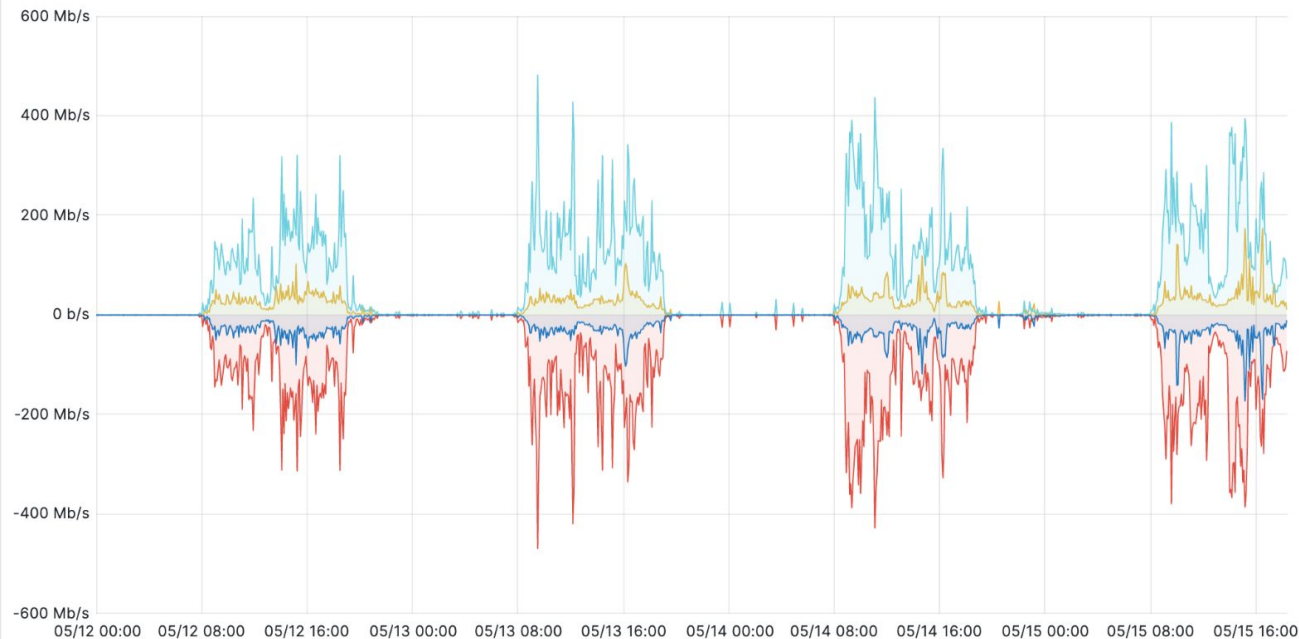


Statistics



Sorry, we don't have an IPv4 vs. IPv6 comparison

vrtr-4 - Traffic Statistics

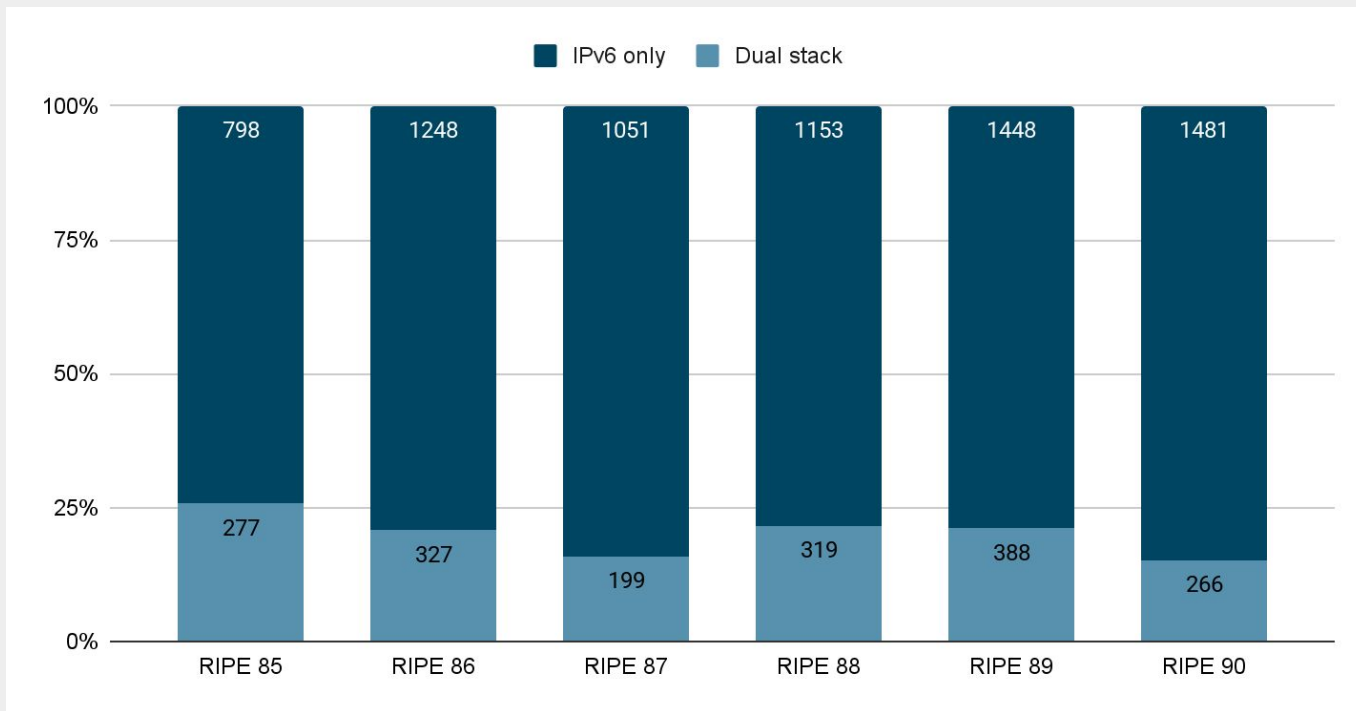


	max	avg
Total in	567 Mb/s	85.2 Mb/s
Total out	558 Mb/s	84.2 Mb/s
mtg-transit in	481 Mb/s	69.3 Mb/s
mtg-peering out	469 Mb/s	68.3 Mb/s
mtg-peering in	174 Mb/s	15.9 Mb/s
mtg-transit out	173 Mb/s	15.8 Mb/s
lo out	772 b/s	743 b/s
lo in	772 b/s	743 b/s

IPv6-Only vs Dual Stack on Main network



More and more devices opting out from using IPv4



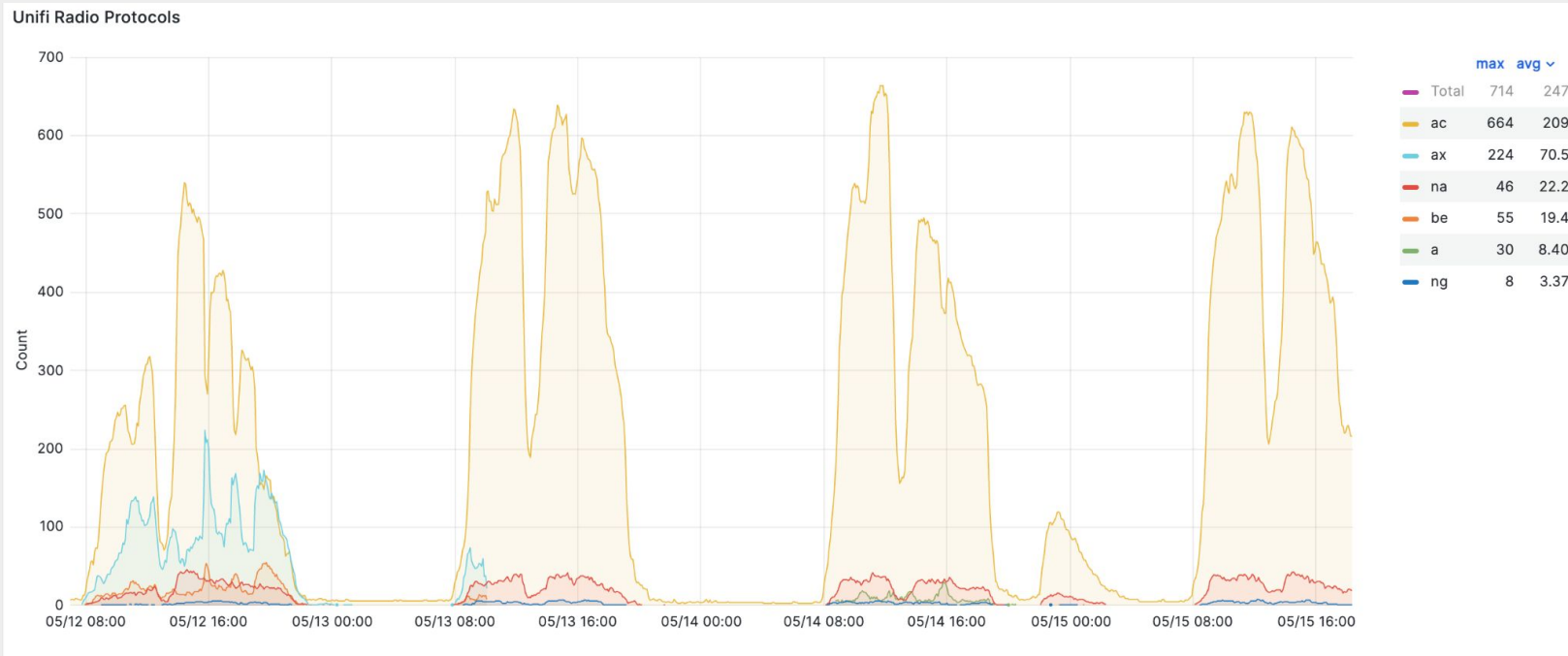


We could still fit behind a single IPv4 address



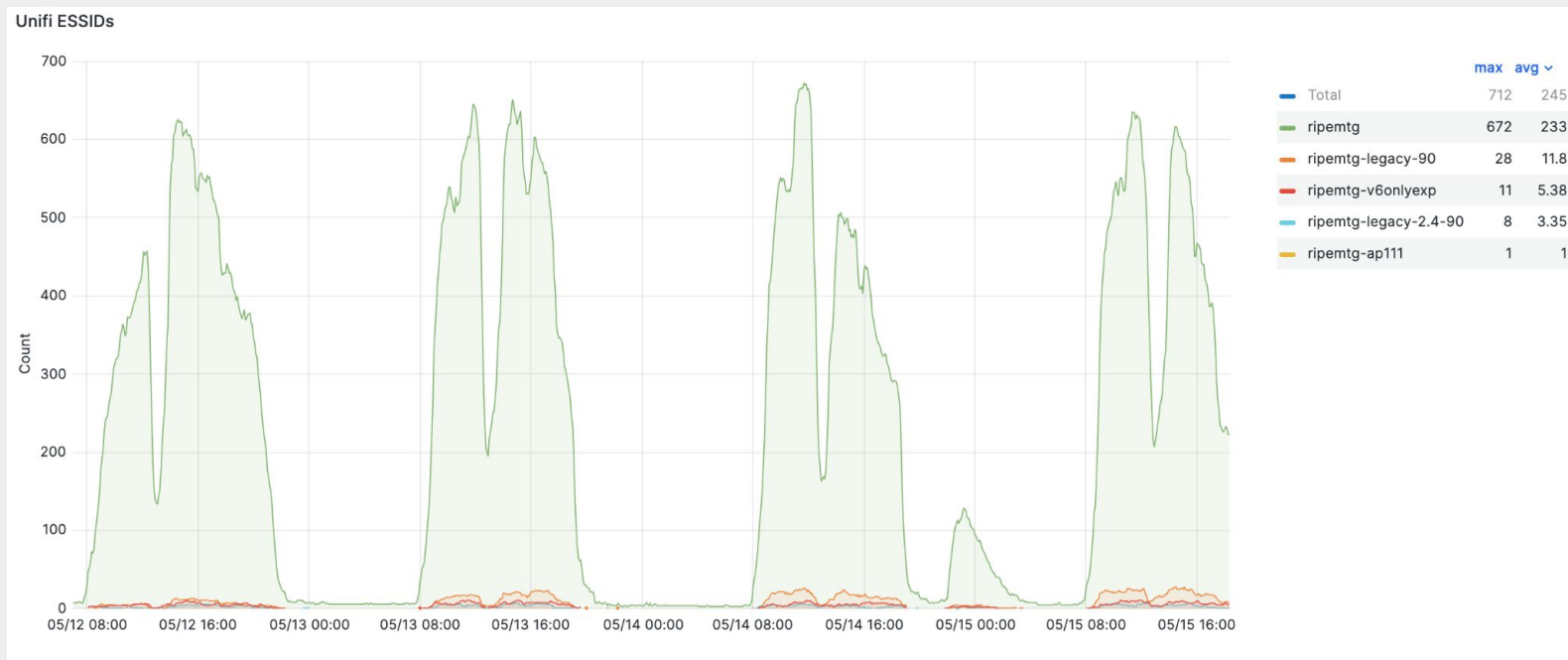


Wi-Fi 5 (ac) is getting old



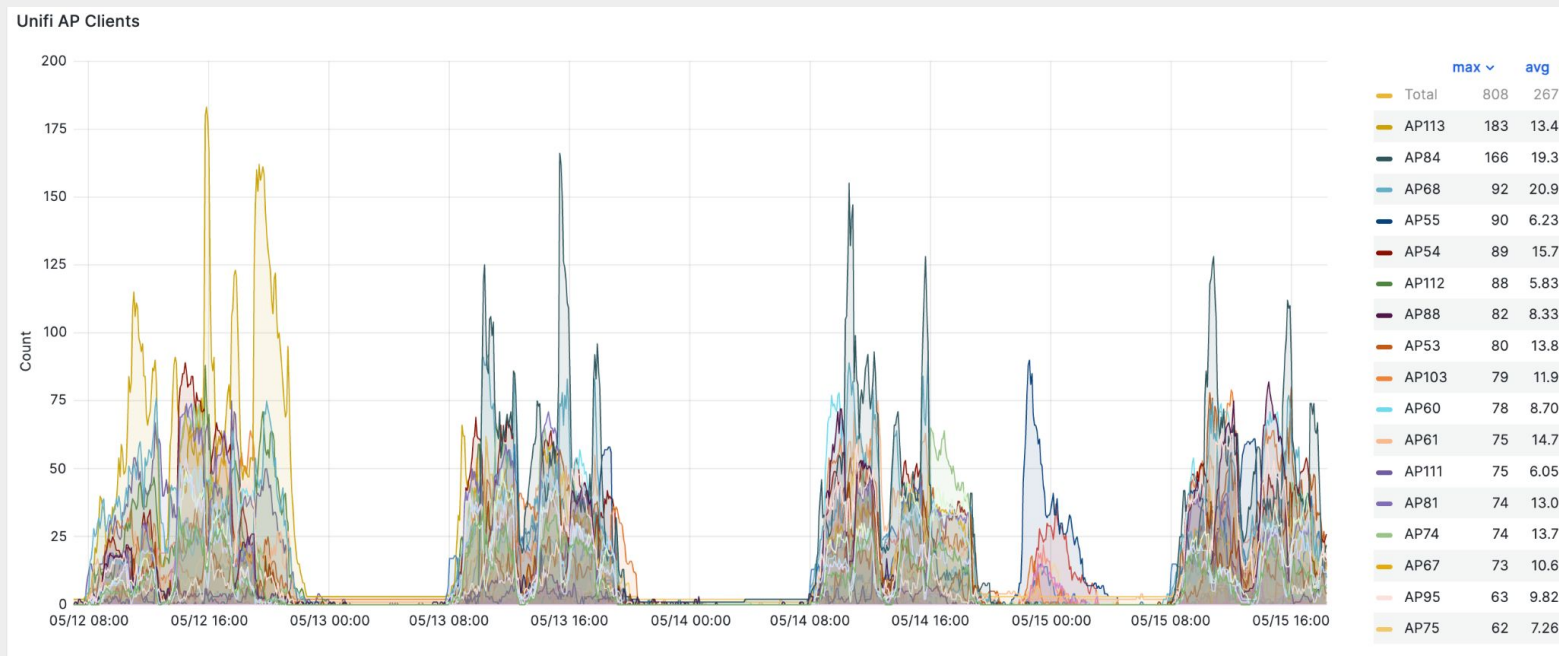


Majority use the default meeting network

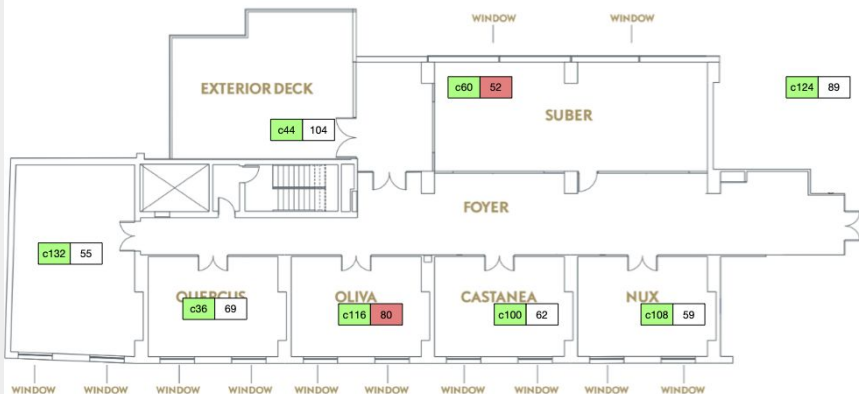




The Access Point next to the barista gets the most users



Access Point Placement



Floor 1

	5 Ghz
	2.4 Ghz



Floor -1

Access Point Placement





Words cannot espresso how much you bean to me

3888 shots


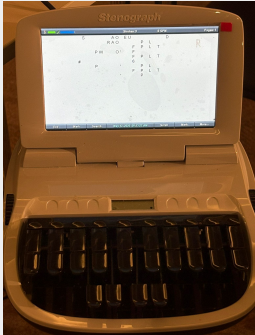

7 kgs of coffee

18 gms per shot



Special Thanks



Remote Participation	Stenographers	Host
		
<p>Tobia Castaldi Antonio Bevilacqua Alessandro Toppi Alessandro Amirante Paolo Navarretta</p>	<p>Mary Mckeon Tina Kealy Anna Papa Murphy Aideen Kelly</p>	<p>Dora Miranda Assis Guerreiro</p>



Questions & Comments



opsmtg@ripe.net